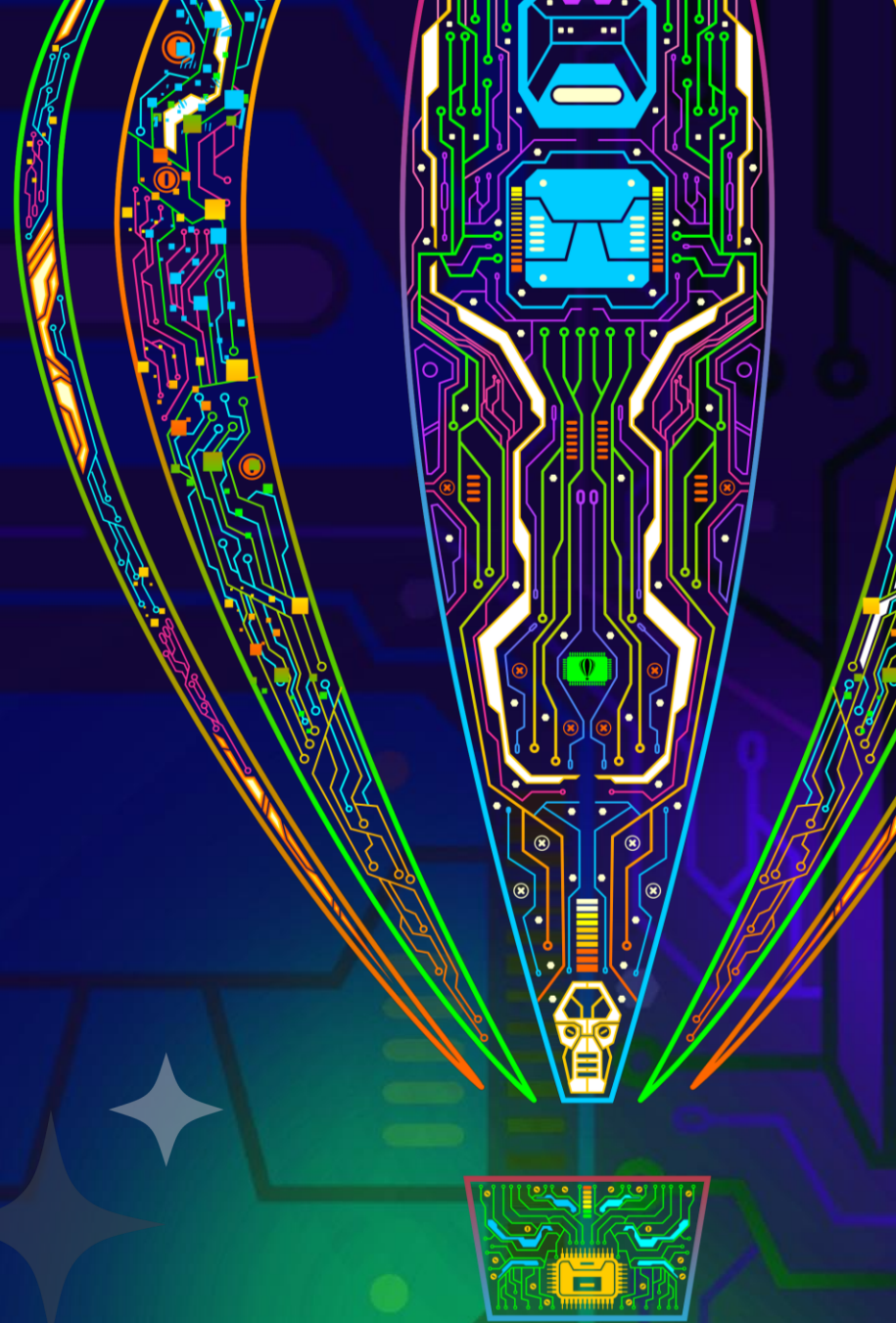


# CorelDRAW<sup>®</sup> 2026

Accelerate your  
ideas with intelligent  
design tools.

All information contained in this presentation is under  
embargo until 9 am EST on March 3, 2026.





Creativity  
meets  
productivity.

# What's included?

All the tools you need to tackle any project



## **CoreIDRAW®**

Vector illustration and page layout

Create anything and everything with this powerful full-featured graphic design application for vector illustration, page layout, and more.



## **CoreIDRAW® Web**

Browser-based graphic design

Design on the go with CoreIDRAW Web. Save your projects to the cloud and access them online, from any web browser.

*Subscriber-exclusive*



## **Corel PHOTO-PAINT™**

Image editing and pixel-based design

Process images in high gear with the robust AI-powered Corel PHOTO-PAINT and enjoy an integrated workflow with CoreIDRAW.



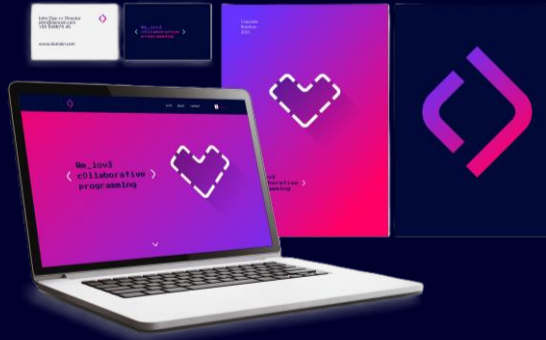
## **Corel® Font Manager**

Font exploration and management

Organize and manage your font library intuitively and use your favorite fonts without needing to install them.

# Who's it for?

Enjoyed by diverse designers and businesses worldwide



## Branding & marketing

From creative professionals working in advertising and publishing, to small businesses producing in-house marketing materials, CorelDRAW Graphics Suite has the tools to create everything from stand-out brand identity assets to alluring sales tools.



## Signage & Large-format printing

Professionals in the sign and print industry rely on CorelDRAW to create artwork for a variety of print outputs, thanks to a powerful color management engine, integrated Pantone support, and superior prepress tools.



## Apparel & textiles

Whether you're in the business of screen printing, embroidery, direct-to-garment printing or apparel, CorelDRAW Graphics Suite has all the tools you need to produce and output designs for the fashion industry.

# Who's it for?

Enjoyed by diverse designers and businesses worldwide



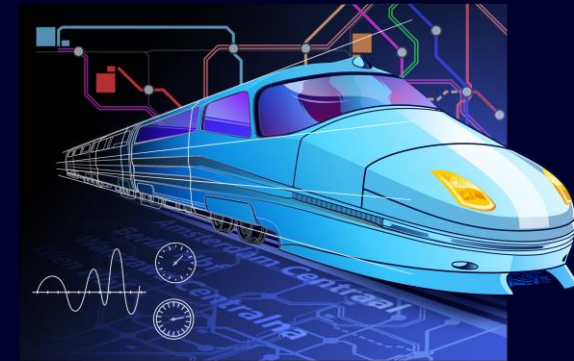
## Commerce

CorelDRAW Graphics Suite has commerce professionals covered with dedicated tools for web and print, whether you're designing point-of-sale promotions or creating assets to enhance an online store.



## Illustration & fine art

Illustrators and artists alike can combine their classic art practices with CorelDRAW's state-of-the-art vector-illustration technology to create beautiful, sophisticated works of art.



## Blueprints, maps & schematics

CorelDRAW is a trusted name in engineering, manufacturing and construction firms with precision tools for creating product and parts illustrations, diagrams, schematics, and other intricate visuals.

# Coming March 3<sup>rd</sup>, 2026

**CorelDRAW<sup>®</sup>**   
GRAPHICS SUITE 2026

- Subscription
- License with maintenance
- One-time purchase

**CorelDRAW<sup>®</sup>**   
TECHNICAL SUITE

- Subscription
- License with maintenance

# CorelDRAW<sup>®</sup>

GRAPHICS SUITE 2026

Powered by Artist Intelligence



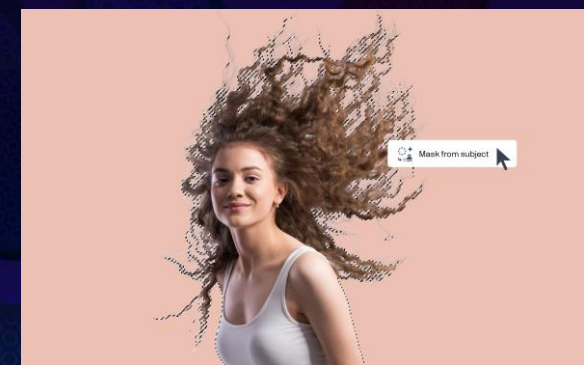
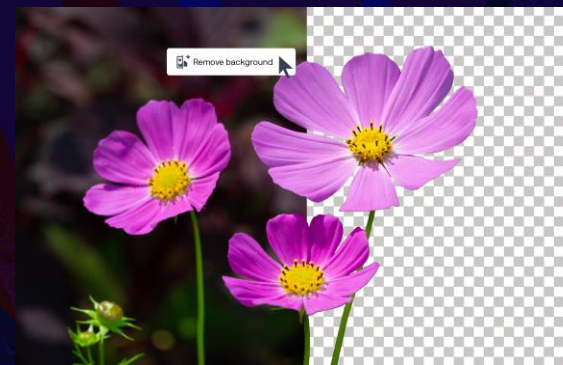
CorelDRAW® Graphics Suite 2026 is built on a belief in **Artist Intelligence**, a philosophy that puts human creativity at the center of innovation. Designed to amplify artistry rather than replace it, this release introduces intelligent tools that accelerate ideation, spark inspiration, and improve workflows, while keeping the creator in control.



# What's new in CorelDRAW Graphics Suite?



# Accelerate your ideas with intelligent design tools



## Generate images with AI

Create unique images from scratch or existing content using the new AI Generate docker in CorelDRAW and Corel PHOTO-PAINT.

## Remix images with AI

Quickly edit and transform images using Nano Banana. Mock up designs, swap elements, place subjects in new settings, and more.

## Remove backgrounds with AI

Remove photo backgrounds instantly with a one-click AI tool that delivers clean, ready-to-use results, even around fine details like hair and fabric.

## Mask photos with AI

Get more precision and control over background removal in Corel PHOTO-PAINT with new AI-assisted subject selection and clip masking.

# Power amazing ideas with AI credits

AI credits are the currency used to generate images in CorelDRAW's GenAI engine. Each image generation consumes a certain number of credits depending on the chosen model.

## **Subscription**

2,000 monthly credits

## **License with maintenance**

2,000 monthly credits

## **One-time purchase**

2,000 credits (one-time)

The 15-day free trial includes 200 credits.  
Additional credits are available for purchase.

# What else is new in CorelDRAW Graphics Suite 2026?



## Fresh, modern UI

CorelDRAW's redesigned UI introduces revitalized icons and refined controls, renewed colors that bring focus to active tools, and more intuitive navigation.



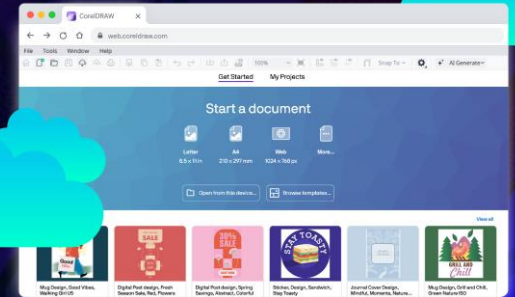
## Performance and quality improvements

Enjoy app launch times around 3x faster or more, smoother font handling, smarter page and export settings, new zoom controls, and significantly better stability.



## More creative content

Enjoy 50 additional pixel-based brushes and 200+ new templates. With this release, subscribers now get 2.5x more brushes and 4x as many templates as other users.



## CorelDRAW Web updates

In addition to regular updates to help you work more efficiently, enjoy a refreshed UI, and the all the same AI tools as CorelDRAW on desktop, so you can design intelligently from anywhere.

**SUBSCRIBER EXCLUSIVE!**

**SUBSCRIBER EXCLUSIVE!**

# Subscribers and maintenance customers get more

Subscribers and maintenance customers will continue to receive exclusive access to features, apps, and workflows, including:

1. **NEW!** monthly Gen AI free credit entitlement\*
2. **NEW!** 200+ templates
3. **NEW!** 5 brush packs (50 Painterly brushes)
4. CorelDRAW Web
5. Cloud template library
6. Cloud-based asset management
7. Cloud file storage
8. Additional content

*\*Perpetual owners get a one-time credit volume for single-use only (not recurring)*



# Offering choice.

Flexible, affordable purchasing for all team sizes and budgets.

## Subscription

- Lowest upfront cost and the flexibility to stop paying as your software needs change. Choice of annual or monthly subscription to match your design needs and budget.
- Guaranteed access to the latest software, exclusive features, content, and more, as long as you maintain your subscription.

## License with maintenance

- Low-cost annual payment plan attached to a one-time license purchase. If you choose to discontinue your Maintenance, you get to keep and use the latest version of the software you received, for as long as operating systems, devices, and technologies support it.
- Guaranteed access to the latest software, exclusive features, content, and more, for as long as your Maintenance is active.

## One-time purchase

- Own and use your software version for as long as you choose, with no extra cost, as long as operating systems, devices, and technologies continue to support it.
- Must purchase new software versions at full price to stay up to date.

# Purchase options comparison



	Subscription	License + maintenance	One-time purchase
<b>Exclusive features</b> Enjoy exclusive features, apps, and workflows.	✓	✓	—
<b>Latest and greatest</b> Instant access to the latest updates at no extra cost.	✓	✓	—
<b>Budget-friendly</b> Lowest upfront cost and the flexibility to stop paying for a defined period as your software needs change.	✓	—	—
<b>Ongoing support</b> Guaranteed support for the latest operating systems, devices, and technologies.	✓	✓	(✓) Quality updates for a limited time
<b>Product ownership</b> Own and use the software version for as long as you choose.	—	✓	✓
<b>Generative AI credits</b> Included credits for prompt-based image creation and image editing features.	✓ Recurring monthly credits	✓ Recurring monthly credits	✓ One-time credit volume (non-recurring)



# CorelDRAW Graphics Suite pricing and availability

EN, FR, ES, BR, DE, IT, NL, SV, CZ, PL, RU, TR, CS, CT, JP

1

## Subscription

- Windows, Mac, web
- Annual (prepaid): \$269 USD

2

## License with maintenance

- Windows, Mac, web
- Enterprise license (1-year maintenance included): \$719 USD

3

## One-time purchase

- Windows & Mac
- \$549 USD

Note: All pricing values SRP excl. taxes/VAT

# Details matter.



# What's included?

A collection of versatile design and drafting applications



## **Corel DESIGNER™** Technical design & illustration

Achieve accurate results with powerful technical design and illustration tools.



## **XVL Studio Corel Edition\*** 3D repurposing

Add context to your technical projects by using 3D views and models in your illustrations



## **CorelDRAW®**

Vector illustration and page layout



## **CorelDRAW® Web**

Browser-based graphic design



## **Corel PHOTO-PAINT™**

Image editing and pixel-based design



## **Corel® Font Manager**

Font exploration and management

\*XVL Studio 3D CAD Corel Edition (for advanced 3D CAD data repurposing) is alternatively available with the CorelDRAW Technical Suite 3D CAD product edition.

# Used in technical drawing and design workflows

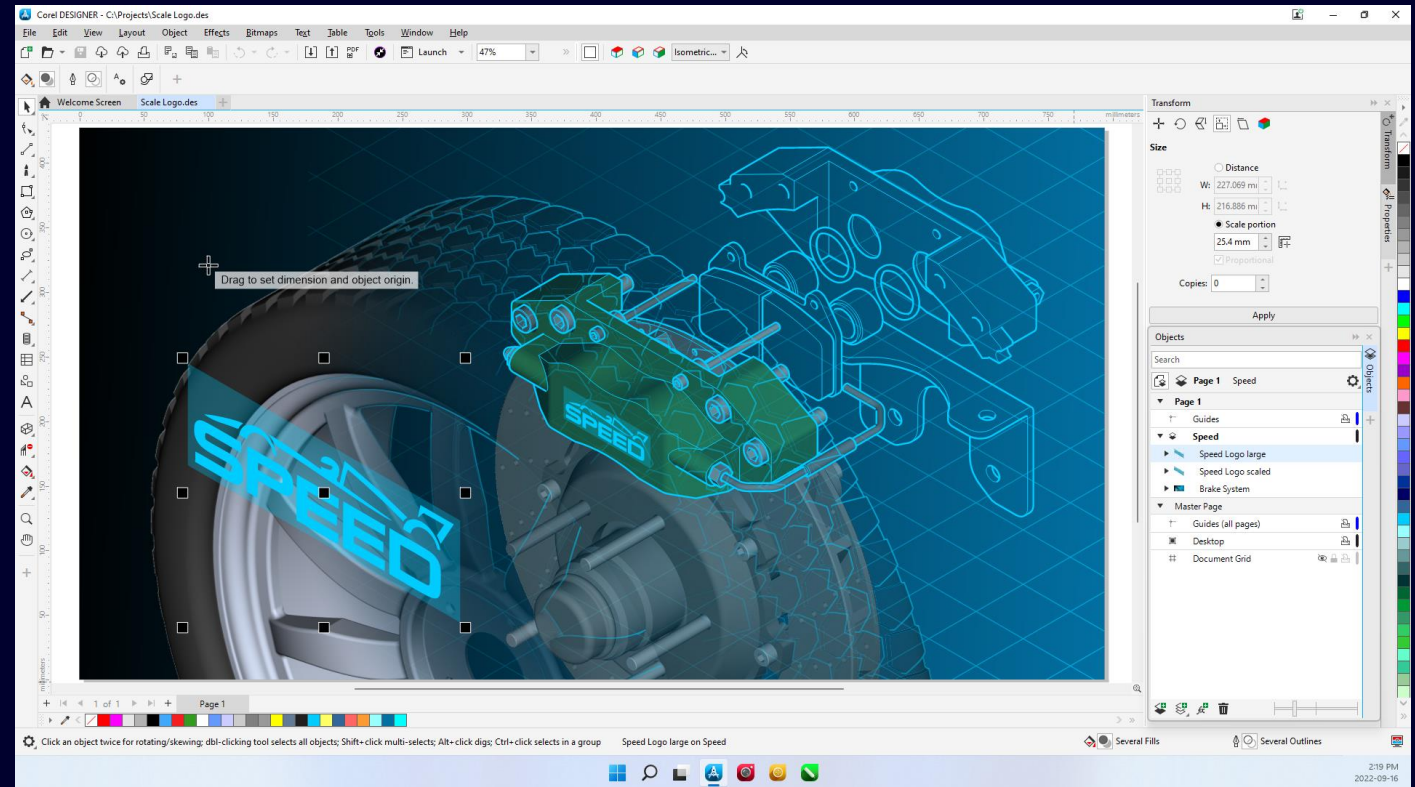
Trusted by businesses globally— from manufacturing and engineering to architecture and high tech

## Top industries

- Discrete manufacturing
- Process manufacturing
- AEC (architecture, engineering, construction)

## Top use cases

- Precise technical drawings
- Clear technical illustrations
- Technical documentation and technical marketing design





## What's new?

In addition to what's new in CoreIDRAW Graphics Suite, CoreIDRAW® Technical Suite 2026 delivers powerful updates for technical illustrators.

### **CoreIDRAW Technical Suite**

Corel DESIGNER™ now includes enhanced S1000D CGM export support, simplifying migration from legacy technical illustration workflows, as well as new SVG profile support, ensuring full compliance with S1000D Issue 6 standards.

### **CoreIDRAW Technical Suite 3D CAD**

CoreIDRAW Technical Suite 3D CAD customers also benefit from improved vector fill accuracy and editability when outputting from 3D, plus updated import support for the latest versions of 3D CAD file formats.



# CorelDRAW Technical Suite pricing and availability

EN, DE, FR, JP (ES, IT, NL, BR, SV, CZ, PL, TR, CS, CT)

1

## Subscription

- Windows, web

Product edition	Annual (prepaid)
CorelDRAW Technical Suite	\$499 USD
CorelDRAW Technical Suite 3D CAD	\$2,799 USD

2

## Business license

- Windows, web

Product edition	Business license (1-year maintenance included)	1-year maintenance renewal
CorelDRAW Technical Suite	\$1,199 USD	\$200 USD
CorelDRAW Technical Suite 3D CAD	\$6,998 USD	\$1,169 USD

Note: All pricing values SRP excl. taxes/VAT